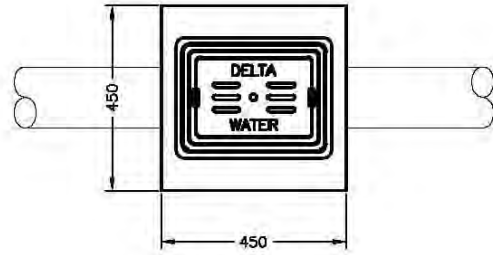
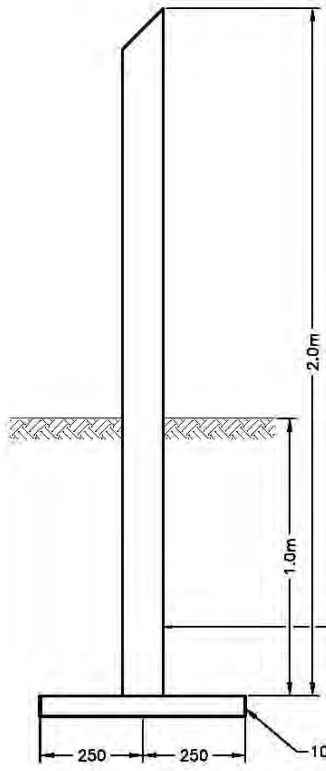


NOTE: ALL VALVE BOXES TO BE SET FLUSH WITH FINISHED GRADE. 0.5m ASPHALT APRON RED'D AROUND VALVE BOX FOR INSTALLATIONS OUTSIDE OF TRAVELLED ROADWAY. LONG SIDE OF VALVE BOX TO PARALLEL THE MAIN AND FLOW.



TOP VIEW



VALVE BOX FRAME AND COVER (SEE DWG. L-4.3) TO BE INSTALLED FOR MAX. FUTURE ADJUSTMENT.

450mm x 450mm x 75mm CONC. SLAB WITH CENTERED CIRCULAR OPENING FOR 150mm P.V.C.

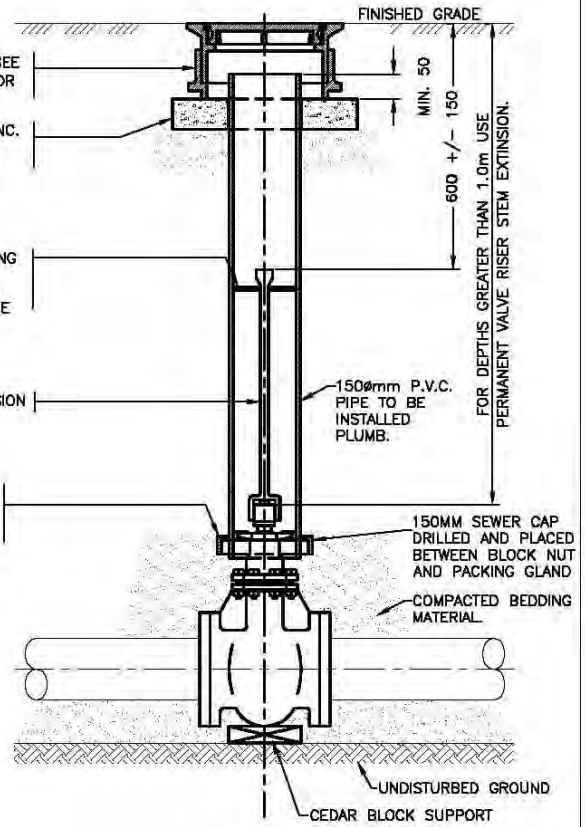
6mm STEEL PLATE CENTERING RING TO BE TACK WELDED TO STEM APPROX. 150mm BELOW NUT OR SECURED WITH PINS THROUGH THE VALVE RISER STEM.

VALVE RISER STEM EXTENSION WHERE REQ'D.

EXTENSION BASE PART (TERMINAL CITY OR APPROVED EQUIVALENT.) OVER THE VALVE BONNET REQ'D FOR VALVES 250mm AND LARGER.

VALVE MARKER, 100mm X 100mm, PAINTED WHITE, TO BE INSTALLED ON PROPERTY LINE OPPOSITE VALVE, WHERE VALVE BOX NOT IN PAVEMENT.

100 x 50 WOOD



SECTION

NOTE:
ALL DIMENSIONS SHOWN IN mm
UNLESS OTHERWISE NOTED.

DATE	REVISION	No.	BY
REVISIONS			

THE CORPORATION OF DELTA
ENGINEERING DEPARTMENT
**STANDARD VALVE BOX
INSTALLATION**

DSN.	DRN.	DWG. No.
CHKD.	APVRD.	L 4.2
SCALE	N.T.S.	
DATE	2014-03-13	RVSN.