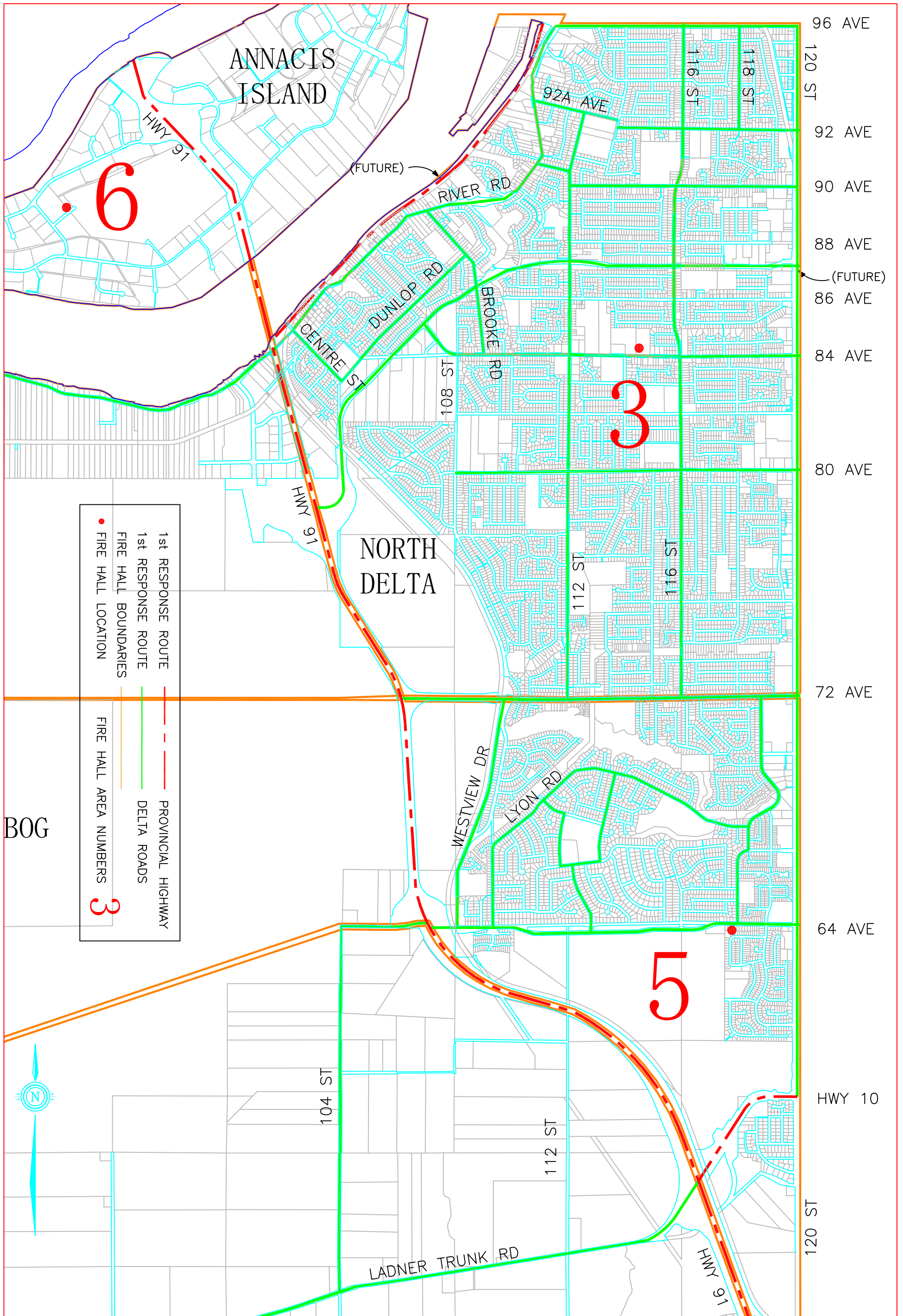


REFERENCE  
**LADNER**

FILE 6.5.4.502.8  
DATE 03\_06\_02

TITLE  
Delta Fire Department Response Routes



TITLE

Delta Fire Department Response Routes

FILE

6.5.4.502.8

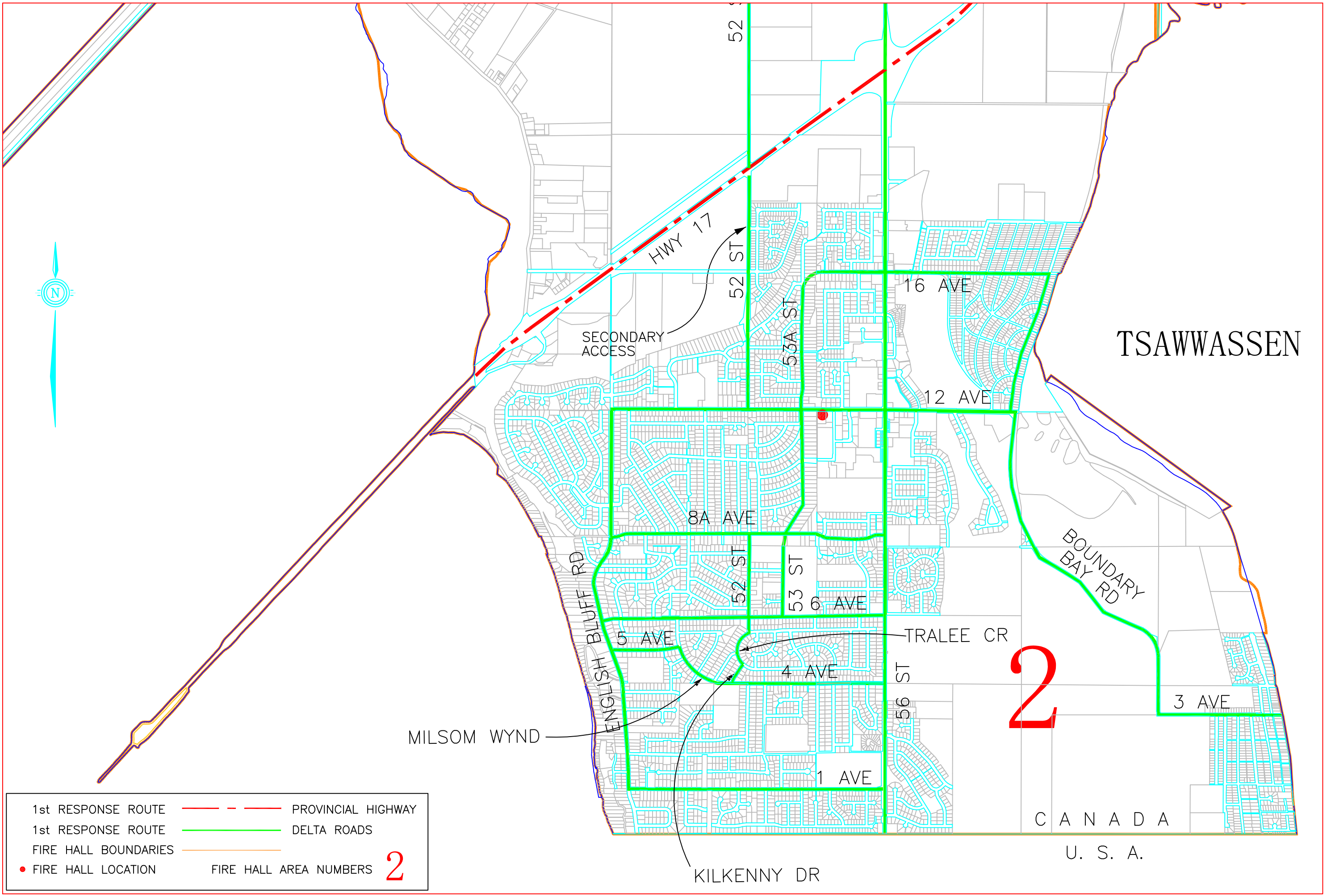
DATE

03\_06\_02

REFERENCE

***NORTH DELTA***





1st RESPONSE ROUTE		PROVINCIAL HIGHWAY
1st RESPONSE ROUTE		DELTA ROADS
FIRE HALL BOUNDARIES		
	FIRE HALL LOCATION	
	FIRE HALL AREA NUMBERS	<b>2</b>

REFERENCE  
**TSAWWASSEN**




FILE 6.5.4.502.8  
 DATE 03\_06\_02

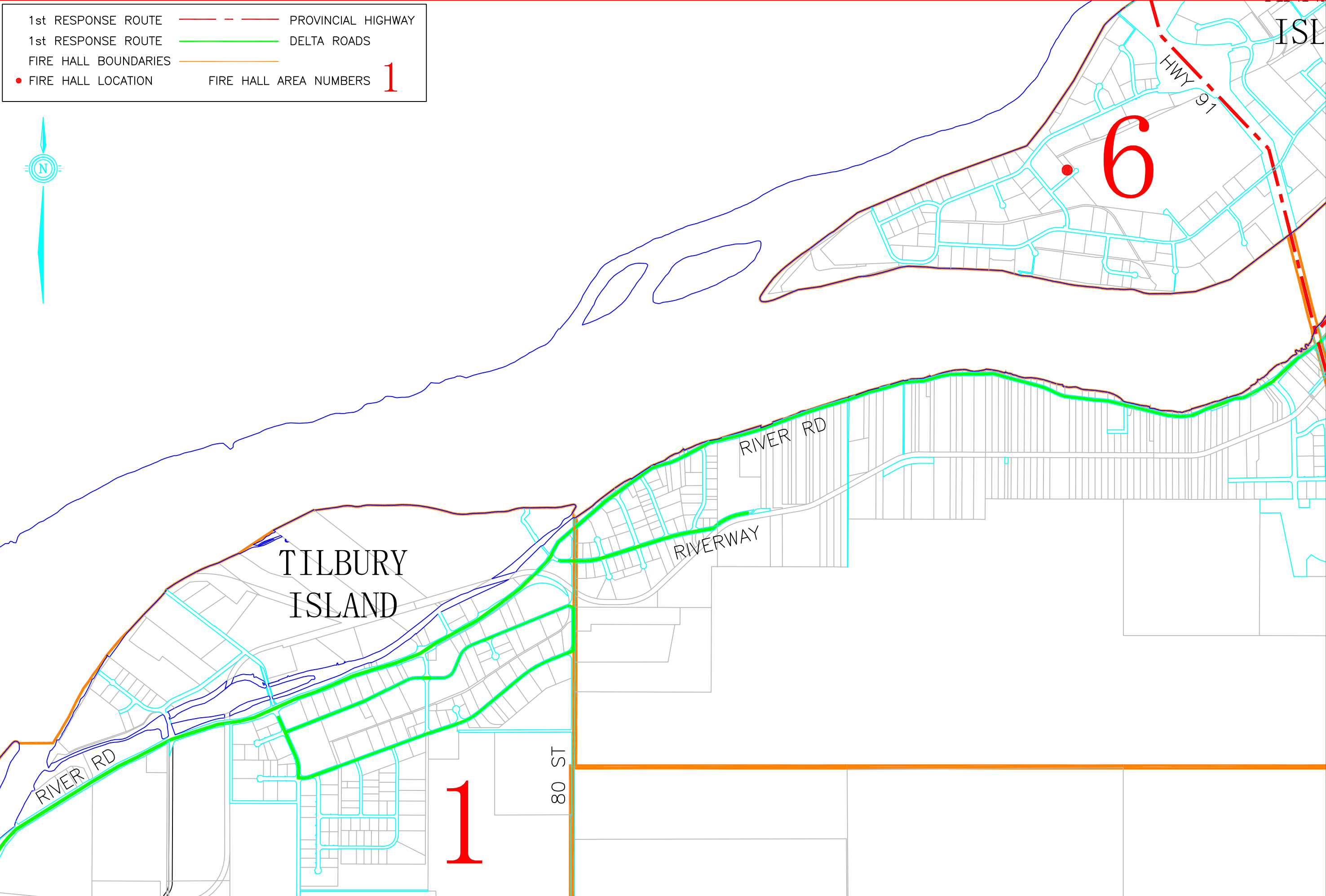
TITLE  
 Delta Fire Department Response Routes

TSAWWASSEN

**2**

C A N A D A  
 U. S. A.

1st RESPONSE ROUTE		PROVINCIAL HIGHWAY
1st RESPONSE ROUTE		DELTA ROADS
FIRE HALL BOUNDARIES		
● FIRE HALL LOCATION		FIRE HALL AREA NUMBERS <b>1</b>



REFERENCE  
**TILBURY**  
**RIVER ROAD EAST**

FILE 6.5.4.502.8

DATE 03\_06\_02

TITLE  
 Delta Fire Department Response Routes